

ITScript Net® - Deployment Override Utility

~~~~

## Override Utility for ini files:

Overrides each setting in the program ITB's Configure Receive.

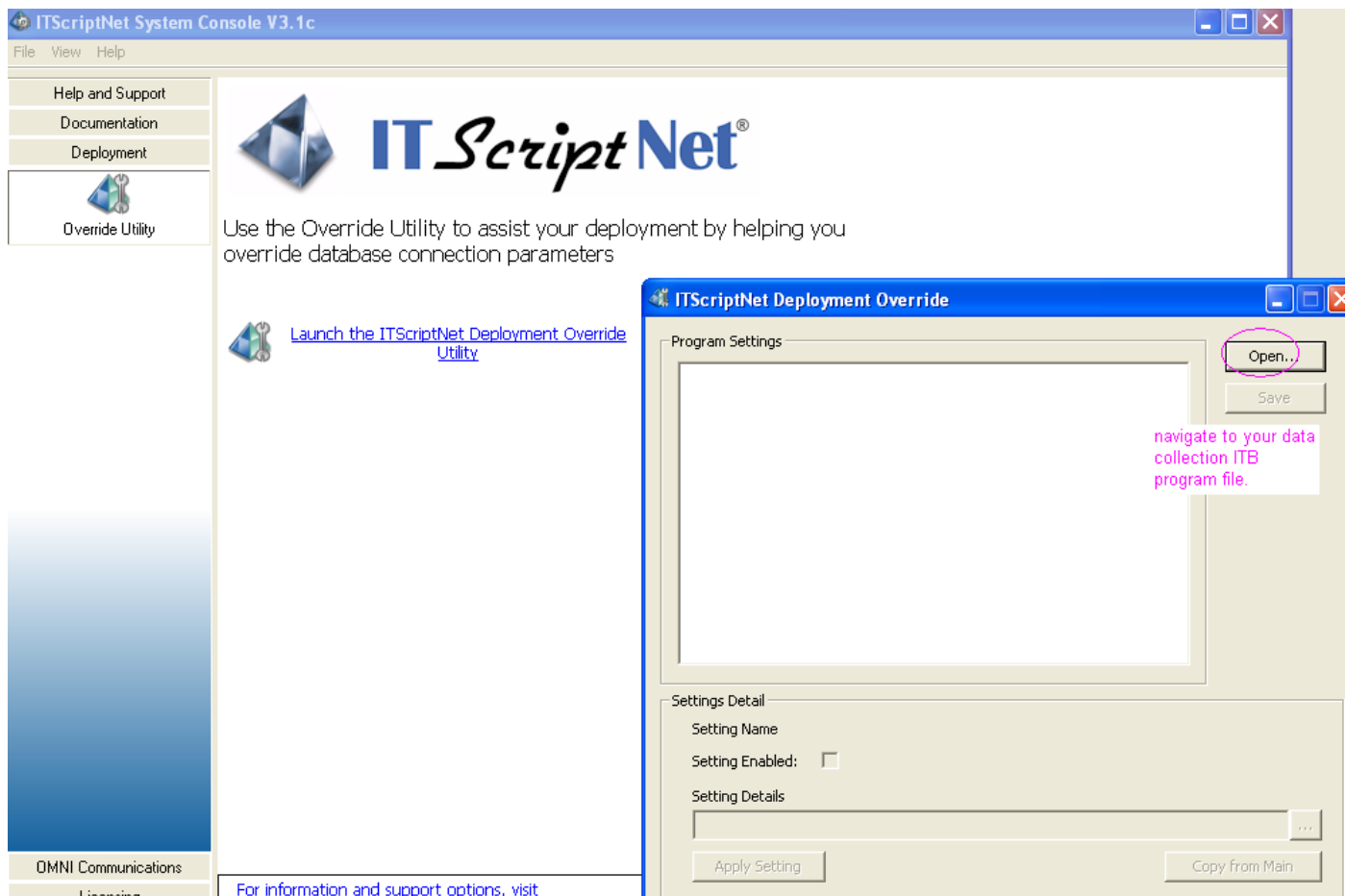
## INI file RULES:

### .ini Must reside:

The ini file must reside in the same folder where the ITScriptNet-designed data collection program *itb file* resides.

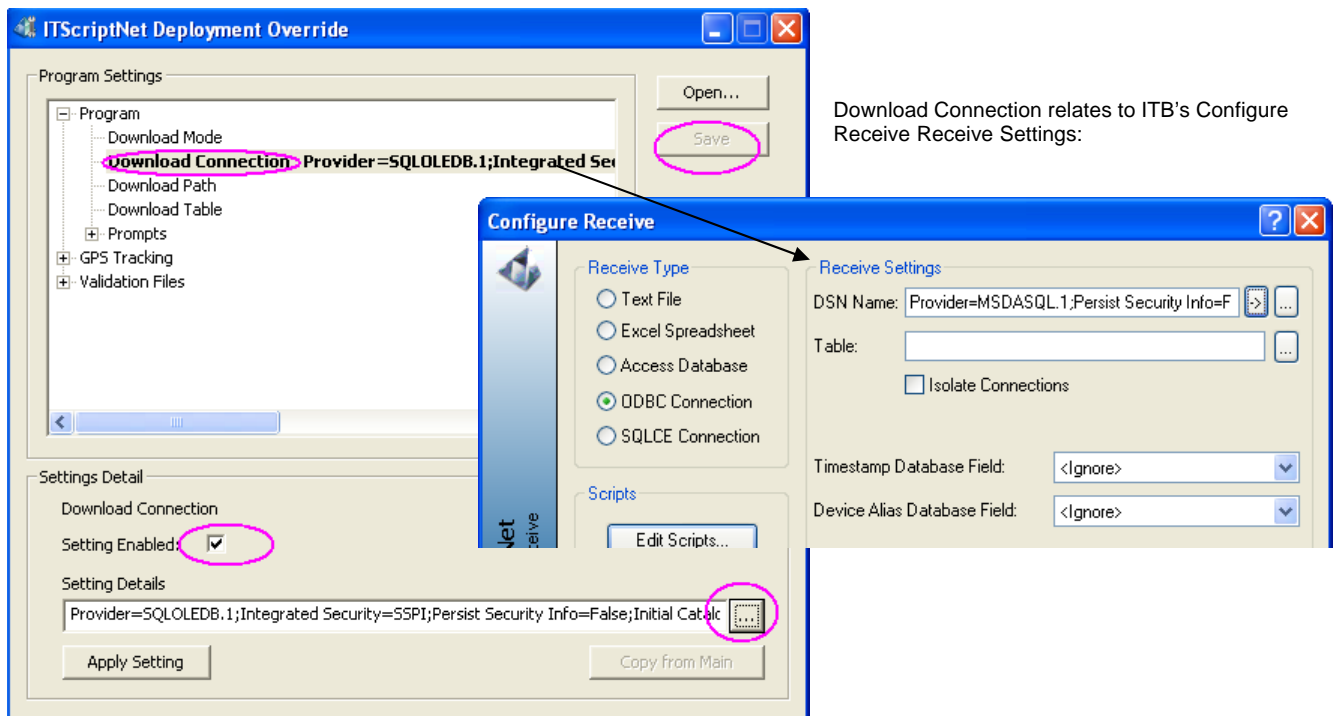
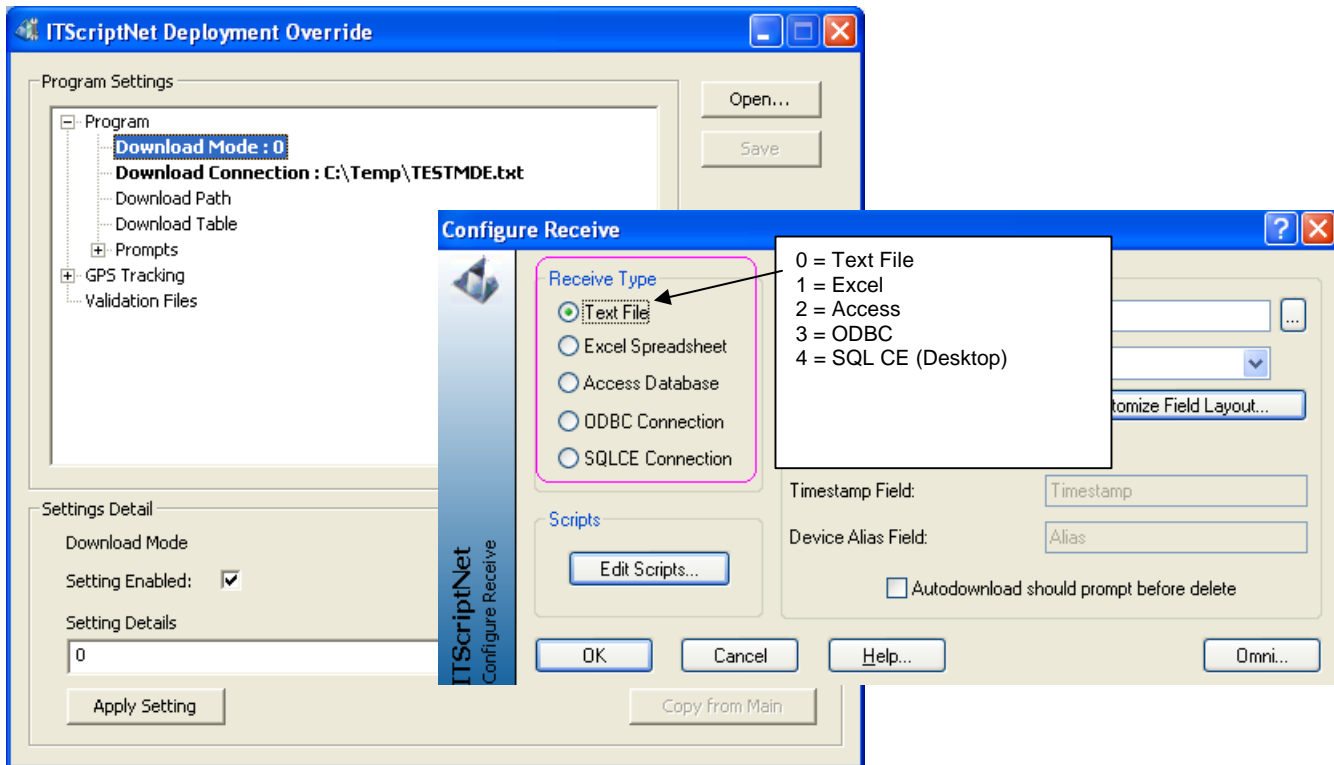
### .ini AND .itb filename = the same:

The filename for the ini file and the program .itb filename MUST BE the same name.



# ITScript Net® - Deployment Override Utility

~~~~~



Download Connection relates to ITB's Configure Receive Receive Settings:

ITScript Net® - Deployment Override Utility

~~~~~

## Download path

Specifies the path that temporary files should be placed in when downloading. Normally, downloaded files are placed in the ITB program directory. If you want to change the download path because of permissions issues or for any other reason, this parameter allows you to do that.

## Download table

Allows you to override the table that the collected data will be placed in. The meaning of the parameter depends on the download mode.

Text File: This parameter does not apply.

Excel: Specifies the Sheet Name that will be used.

Access, SQL CE, ODBC: Specifies the Table name to use.

